



# Architecture and synchronization



pm:  
<https://pandorafms.com/manual/!current/>  
Permanent link:  
[https://pandorafms.com/manual/!current/en/documentation/pandorafms/command\\_center/02\\_architecture](https://pandorafms.com/manual/!current/en/documentation/pandorafms/command_center/02_architecture)  
24/10/03 18:59





# Architecture and synchronization

## Architecture

The architecture of a Command Center (Metaconsole) consists of:

- A central node, the Command Center, with its own server.
- As many server nodes as needed, the Instances.

Instances are normal installations of Pandora FMS. They consist of an **Web console** as a presentation layer (*front end*) and a server as a data access layer (*back end*) that processes incoming data, performs remote checks, et cetera.

From version 756 of Pandora FMS, the synchronization system has been redesigned from scratch, since the changes will be replicated to the nodes automatically without the need of the manual synchronization that was done before.

When upgrading, all already centralized Command Center environments will be forced to go through the new Merging tool section located under Centralised management in order to be properly centralized again.

## Synchronization

### Where is the data?

Some data are in the Instances, others in the Command Center and others in both parts, needing to be synchronized for their correct operation.

In the Instances:

- The agents.
- The modules.
- Alerts.
- Policies.

In the Command Center:

- Command Center configuration.
- Components.

- Reports and report templates.
- Network maps.
- Visual maps.
- NetFlow filters.

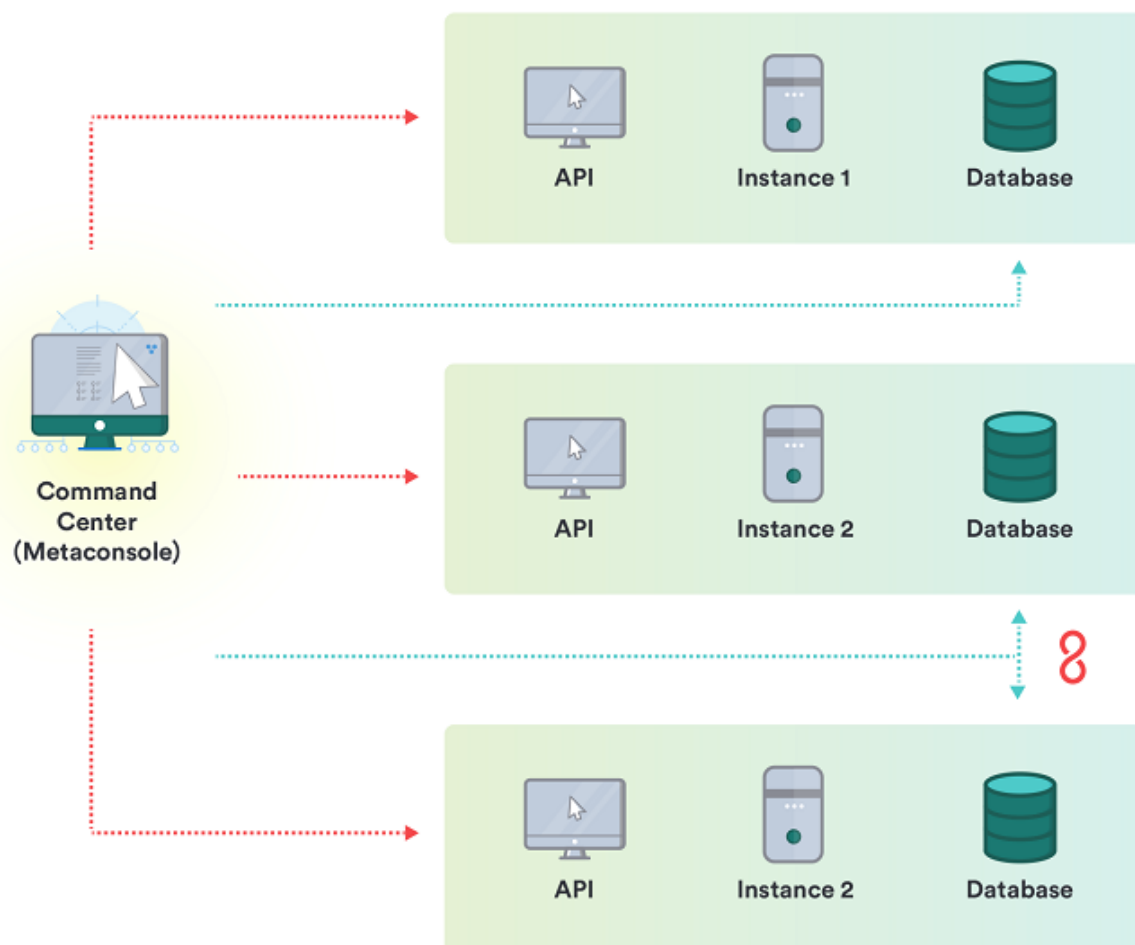
In both:

- Users and profiles.
- The groups.
- Templates, actions and alert commands.
- The tags.
- Categories.

## How is the information obtained and modified?

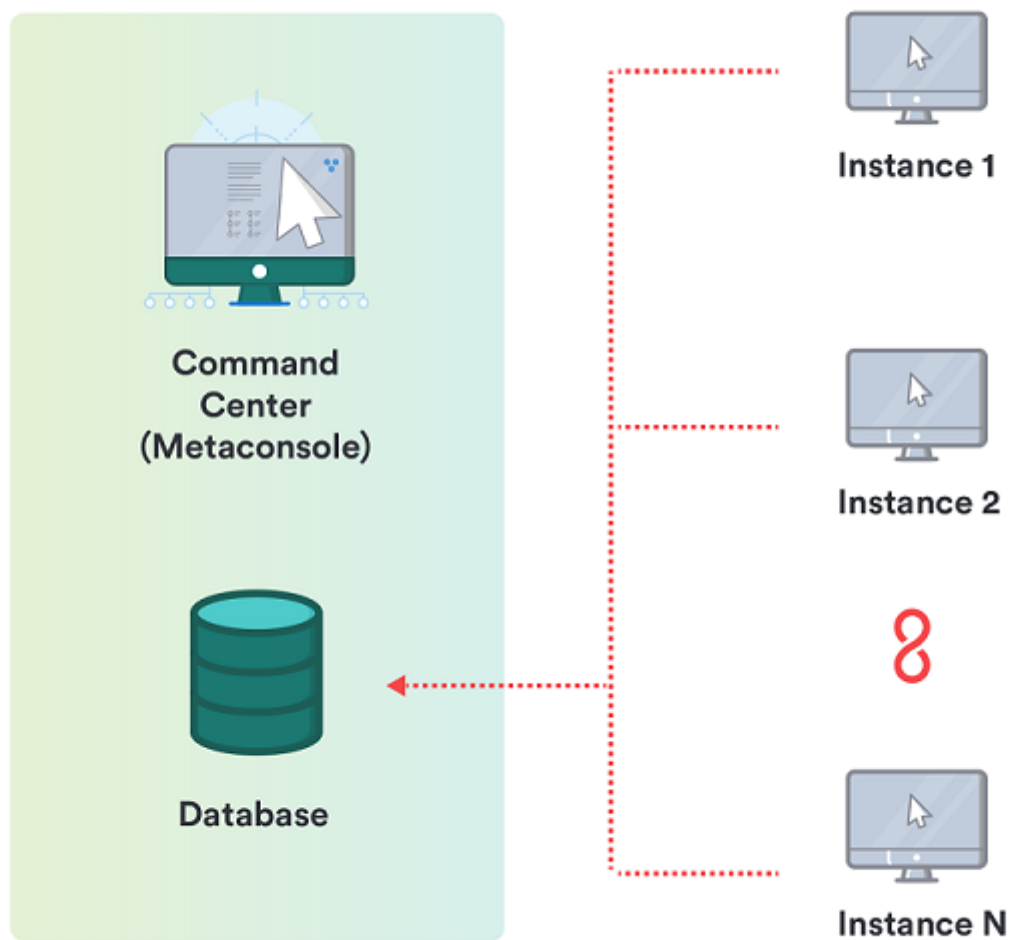
The Command Center obtains and modifies Instance information in two different ways:

- Active: Access to the database or API of the Instances remotely from the Command Center (this is the case of agents, modules, alerts, et cetera).



- Passive: Replication of data from the Instances to the Command Center database (this is the case of

events).



[Back to Pandora FMS Documentation Index](#)