



Installation of Pandora FMS Agents



URL: <https://pandorafms.com/manual/!780/>
Permanent link: https://pandorafms.com/manual/!780/en/documentation/pandorafms/technical_annexes/32_pfms_install_software_agent
2025/03/04 21:22





Installation of Pandora FMS Agents

For the online installation of Pandora FMS Software Agent see section [“Online installation of Pandora FMS Software Agent”](#).

Please note that in order to encrypt the communications through the Tentacle protocol between the software agents and their respective PFMS servers, it will be necessary to have SSL certificates and keys. Please visit the section [“Communication encryption”](#) in the Tentacle protocol technical reference.

Agent Requirements

The Agent can run on any computer with the minimum required operating system, any of the following are valid:

Component	Operating System
Pandora Agent 4.0 or later	RedHat Enterprise (RHEL) 9 / Rocky Linux 9 . RedHat Enterprise (RHEL) 6.x and 8. Fedora 34. CentOS 6.x, 7 and 8. AlmaLinux. SLES 11 SP1 or later. OpenSUSE 11.x or later. Debian 5.x or later. Ubuntu Server or Desktop version 11 or later. Linux Mint. Elementary OS. Manjaro. HPUX B.11.11 or later, with Perl 5.8. AIX 4.3.3 or later, with Perl 5.8. AIX 7.1 and 7.2. BSD Systems (NetBSD, OpenBSD, FreeBSD), with Perl 5.8. MacOS X 10.6 or later. Solaris 8 or later, with Perl 5.8. Windows NT4 (see special notes for this version). Windows XP. Windows 2000. Windows 2003. Windows 2008. Windows 7. Windows 8. Windows 10. Windows 11. Windows 2012. Windows server 2016. Windows server 2019.
Pandora Android Agent 2.0 or later	Android 6 or later
Pandora Embedded Agent 4.0 or later	Embedded devices, compilation required

There is a special agent for Windows NT, which is basically the Unix agent compiled for Windows, although its performance is much lower than that of a native Windows agent and native API access features are not available.

In addition, in UNIX environments, the following must be installed:

- Perl 5.8 or later
- It will also be necessary to install the following dependencies:

```
perl-YAML-Tiny-1.73-2
perl-Sys-Syslog
unzip
```

- Configure logrotate:

```
cat> /etc/logrotate.d/pandora_agent <<E0_LRA
```

```
/var/log/pandora/pandora_agent.log {  
    su root apache  
    weekly  
    missingok  
    size 300000  
    rotate 3  
    maxage 90  
    compress  
    notifempty  
    copytruncate  
}  
  
EO_LRA
```

```
chmod 0644 /etc/logrotate.d/pandora_agent
```

Agent Installation on RedHat Enterprise (RHEL) 9 and Rocky Linux 9

Download and install it through:

```
dnf install -y  
https://packages.pandorafms.com/pandorafms/latest/pandorafms_one_agent_linux_bin  
-latest.el9.x86_64.rpm
```

The installation package installs the following dependencies:

```
perl wget curl perl-Sys-Syslog unzip libnsl libxcrypt-compat
```

These dependencies are required and, if necessary, must be installed separately.

For uninstalling [see the corresponding section](#).

Installing the Agent on CentOS 8 / Rocky Linux / AlmaLinux

Installation of dependencies:

```
yum install dnf-plugins-core -y  
yum config-manager --set-enabled powertools -y  
yum install -y perl-YAML-Tiny perl-Sys-Syslog unzip
```

If you are going to use the option [server_ssl](#) install the following dependencies, enter in the terminal:

```
yum install perl-I0-Socket-SSL -y
```

Agent Installation:

```
yum install -y  
https://packages.pandorafms.com/pandorafms/latest/pandorafms_one_agent_linux_bin-latest.el8.x86_64.rpm
```

For uninstalling [see the corresponding section](#).

Installing the agent on CentOS 7

Installation of dependencies:

```
yum install dnf-plugins-core -y  
yum install -y perl-YAML-Tiny perl-Sys-Syslog unzip
```

If you are going to use the option `server_ssl` install the following dependencies, enter in the terminal:

```
yum install perl-I0-Socket-SSL -y
```

Software agent installation:

```
yum install -y  
https://packages.pandorafms.com/pandorafms/latest/pandorafms_one_agent_linux-latest.noarch.rpm
```

For uninstalling [see the corresponding section](#).

Installing the agent on Ubuntu Server 22.04

Installing the Software agent:

```
apt update  
apt install -y perl coreutils wget curl unzip procps python3 python3-pip  
wget  
https://packages.pandorafms.com/pandorafms/latest/pandorafms_one_agent_linux-latest.tar.gz  
tar xvzf pandorafms_agent_linux-7.0NG.tar.gz  
cd unix  
./pandora_agent_installer --install
```

```
cp -a tentacle_client /usr/local/bin/
```

Delete the unix directory.

If you are going to use the option `server_ssl` install the following dependencies, enter in the terminal:

```
apt install libio-socket-ssl-perl -y
```

Software agent configuration:

```
sed -i "s/^remote_config.*$/remote_config 1/g" $PANDORA_AGENT_CONF  
/etc/init.d/pandora_agent_daemon start  
systemctl enable pandora_agent_daemon
```

For uninstalling [see the corresponding section](#).

Installing the Agent from tarball

This version of the agent is ready to be installed on any Unix/Linux/macOS system.

https://packages.pandorafms.com/pandorafms/latest/pandorafms_one_agent_linux-latest.tar.gz

The agent does not require compilation or preparation, once you have downloaded the agent in `.tar.gz` format:

1. Elevate privileges to root. You are solely responsible for said key.

```
su -
```

2. Copy to `/tmp`, change to that directory, and run:

```
tar xvzf pandorafms_one_agent_linux-latest.tar.gz  
cd unix  
./pandora_agent_installer --install
```

3. Manually start the Agent:

```
/etc/init.d/pandora_agent_daemon start
```

Custom Agent Installation

The Agent can be installed in a directory defined by the user in an integral way, this means that all the agent files will be put in that directory: logs, configuration files, binaries, help pages man, etc.

To use that method, just run like the following example:

```
./pandora_agent_installer --install /opt/pandora
```

The only file that Pandora FMS will create outside that directory defined by the user, is the agent launcher in `/etc/init.d/pandora_agent_daemon` (or equivalent in other Unix systems), and the link in the directory of the system boot level, for example `/etc/rc.d/rc2.d/S90pandora_agent_daemon`.

In addition, you can configure the installation so that instead of running the Agent as root, it can be run as another user. For example, for the Agent to run with the user `pandora`, it would be:

```
./pandora_agent_installer --install /home/pandora pandora
```

When a custom user is specified, the Agent must be installed in a custom location where the user has write permissions (`/home/pandora` in the previous example).

- The user `pandora` is disabled by default, you must enable it by putting a valid shell in `/etc/passwd` if you want to use it to run the agent with that user.
- For users running MAC OS X version 10.11 or higher (El Capitan or newer): Apple® has added a new layer of security to OS X. They are gone some root privileges. When installing the Pandora FMS Agent it will appear as a restricted process. Only restricted processes that are signed by Apple® will be able to modify these files. However, you can disable this security by booting into recovery mode and disabling it in a terminal by running: `csrutil disable`.

Installing the agent on NetBSD and FreeBSD

The location of the files and the structure of the init script are different compared to Linux.

https://packages.pandorafms.com/pandorafms/latest/pandorafms_one_agent_linux-latest.tar.gz

Peculiarities of the installation on FreeBSD:

1. Acquire root permissions:


```
su -
```

2. Copy the downloaded file to /tmp and once inside /tmp run:

```
tar xvzf pandorafms_agent_linux-7.0NG.tar.gz
cd unix
./pandora_agent_installer --install
```

After installation, add the following line to /etc/rc.conf:

```
pandora_agent_enable="YES"
```

To enable the Pandora FMS agent, these settings are needed, otherwise the process will not start.

If you want to start the agent manually, run this:

```
/usr/local/etc/rc.d/pandora_agent start
```

Software agent:

```
/usr/local/bin/pandora_agent
```

Boot script:

```
/usr/local/etc/rc.d/pandora_agent
```

Configuration file:

```
/usr/local/etc/pandora/pandora_agent.conf
```

Plugins:

```
/usr/local/share/pandora_agent/plugins/*
```

Helps man:

```
/usr/local/man/man1/*
```

Others: The data_in and log directories are the same as in GNU/Linux.

Installing the Agent on Windows

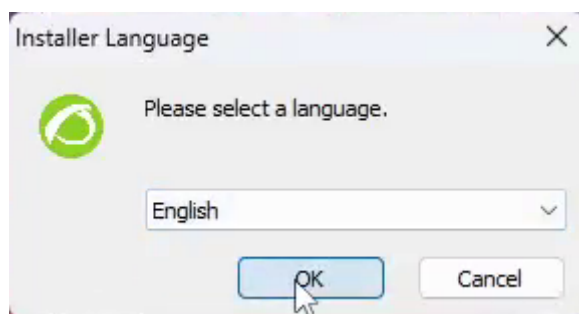
The agent is delivered as a [self-installer in executable format](#) (.exe). To install Pandora FMS agent in MS Windows® download and execute it.

<https://pandorafms.com/en/downloads/>

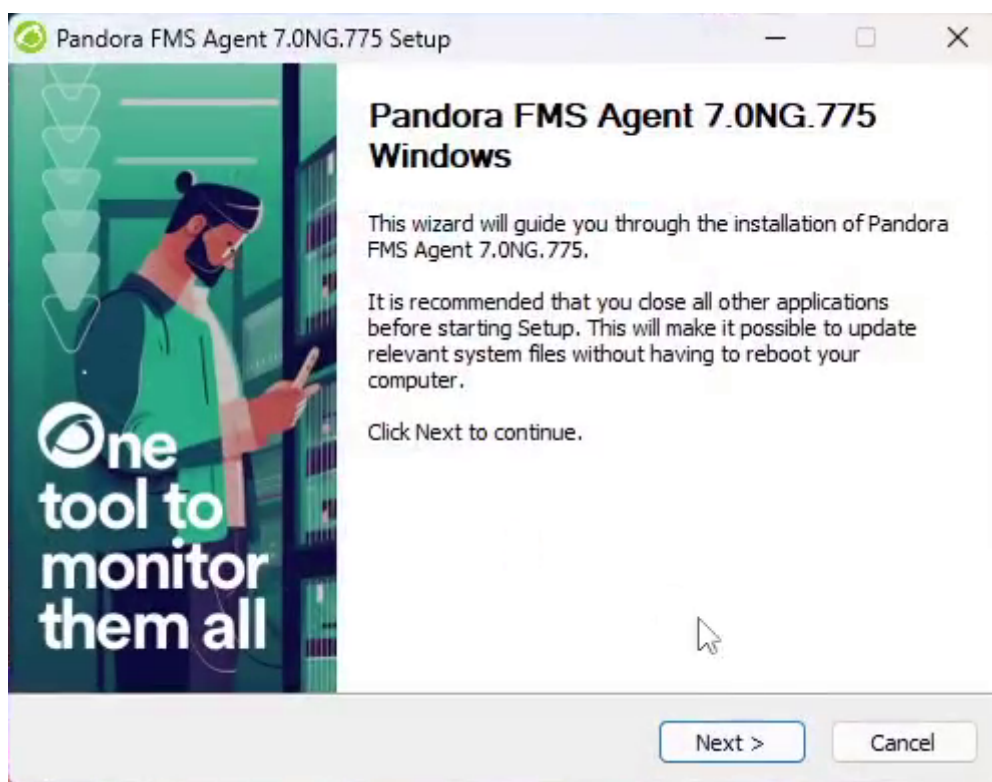
The installer will guide you through the necessary steps in the language you select. The following example shows the installation for Windows 10®. If you are running MS Windows® as a standard user you will need Administrator permissions, enter them when running the installer.



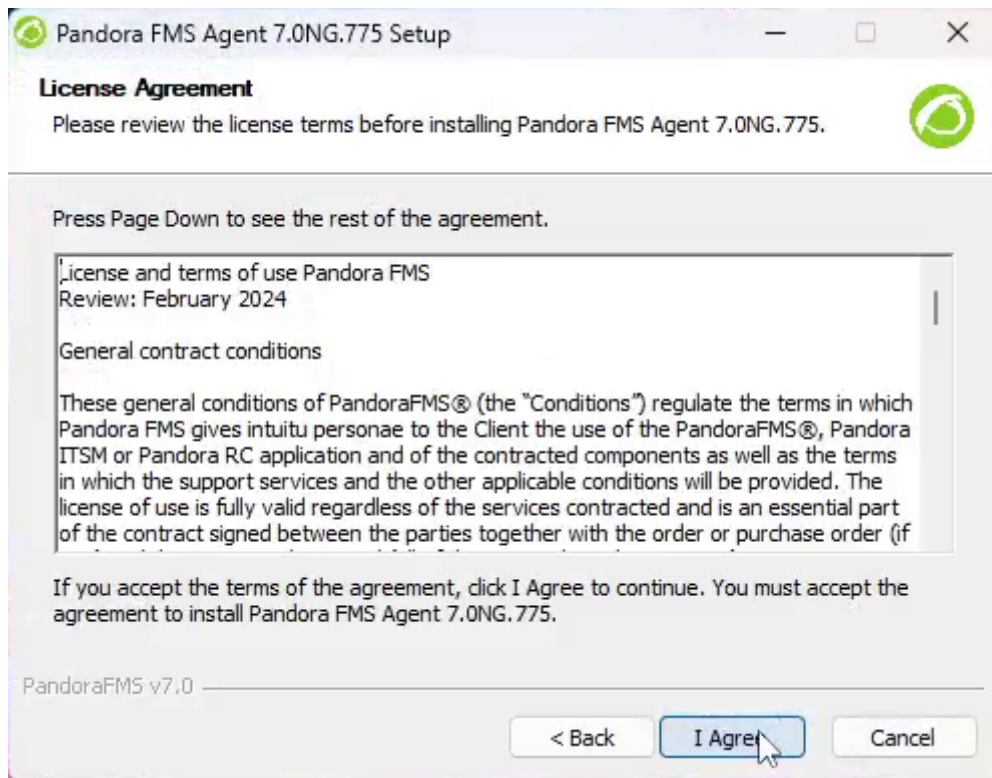
Select the language:



Follow the installer steps:

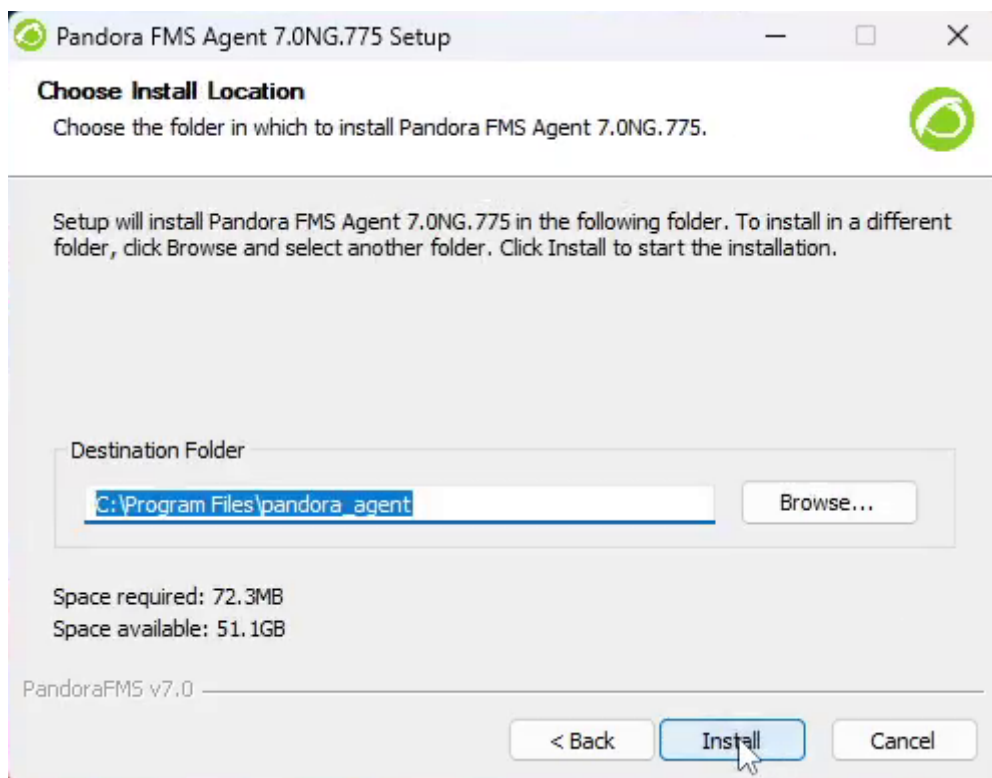


Accept the license terms and click Next:

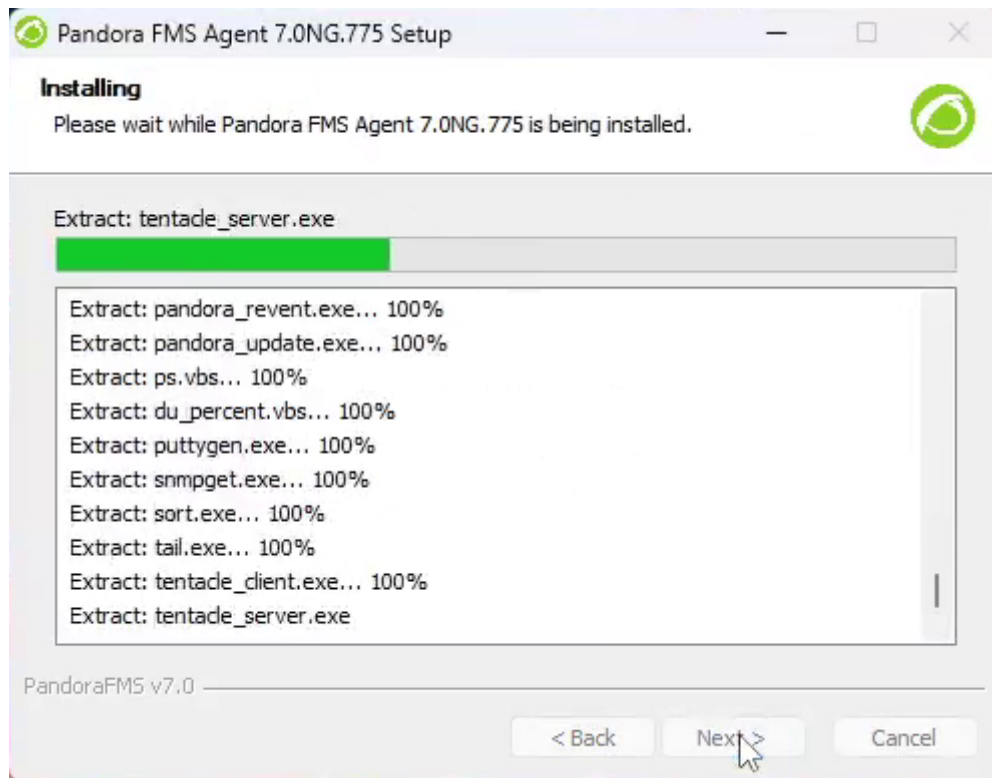


Select the path where the Pandora FMS agent will be installed, by default it is installed in:

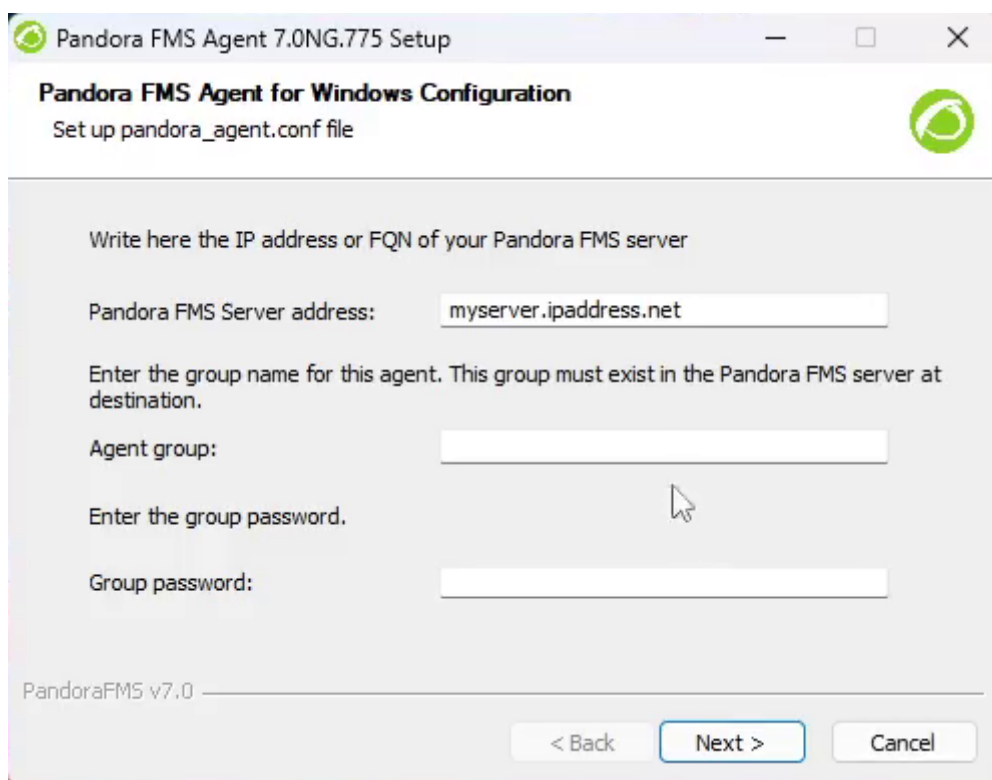
%ProgramFiles%\pandora_agent), you can change it by clicking Browse.... Then click Next:



Wait for the files to be copied.



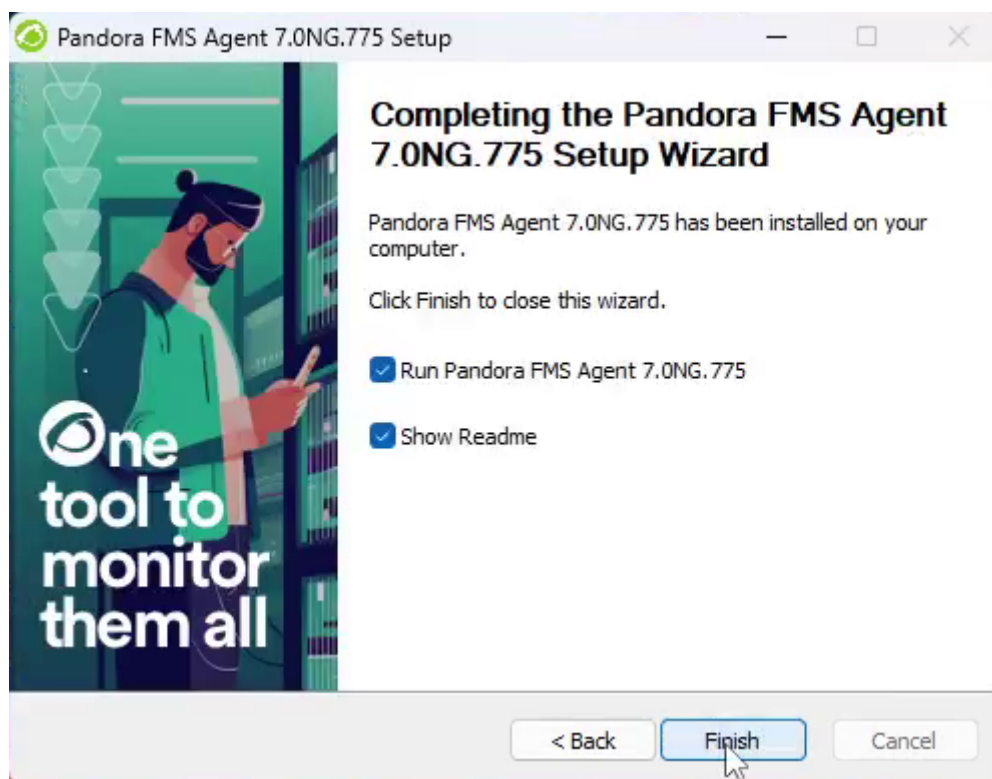
Configure the data for the agent as the IP address (or name) of the Pandora FMS server that will receive the Agent data. To be able to change other parameters, such as changing the name of the agent (by default it takes the value of the *hostname* of the machine) or the path of the temporary files, you will have to manually edit the agent configuration.



The remote configuration of the software agent is enabled by default. Check the options to be used such as basic security monitoring and/or security hardening and/or hardware and software inventory control. Set the minimum amount of free space for temporary files.



Start the Pandora FMS agent service, otherwise you will have to do it manually, or it will start when Windows restarts again.



The installation is finished, you can change the agent parameters in the `pandora_agent.conf` file or through the direct link in the Pandora FMS menu.

Unattended installation of Windows Agent

As of Agent version 5.1, the installer supports unattended mode. To carry out the installation, you simply have to execute the following:

```
"Pandora FMS Windows Agent v7.0NG.VERSION-BUILD_ARCH.exe" /S
```

In case you want to install the Agent in a different path than the default one:

```
"Pandora FMS Windows Agent v7.0NG.VERSION-BUILD_ARCH.exe" /S /D=C:\PFMS_agent
```

You can also pass certain parameters to be written in the configuration file of the agent to create. Thanks to these options, the deployment of Pandora FMS agents has full customisation. The command line options that are supported are the following:

```
--ip
```

- Corresponds to the token named `server_ip`.

```
--group
```

- Corresponds to the token named `group`.

```
--alias
```

- Corresponds to the token named `agent_alias`.

```
--remote_config
```

- Corresponds to the token named `remote_config`.

For example, if you want to create an agent that belongs to the *Applications* group, named *Mifunne* and that points to the server with the IP address *192.168.0.59*, with the **remote_configuration enabled**:

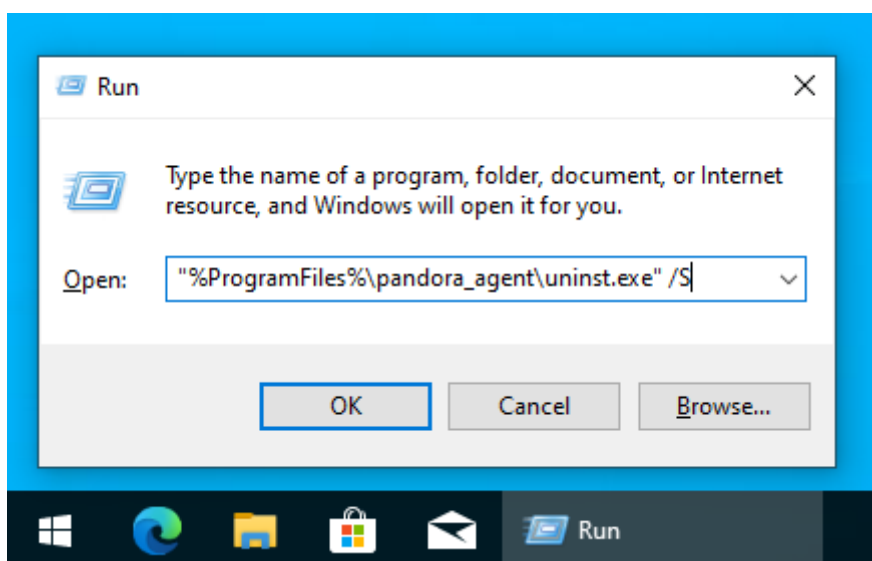
```
"Pandora FMS Windows Agent v7.0NG.VERSION-BUILD_ARCH.exe" /S --ip 192.168.0.59  
--group Applications --alias Mifunne --remote_config 1
```

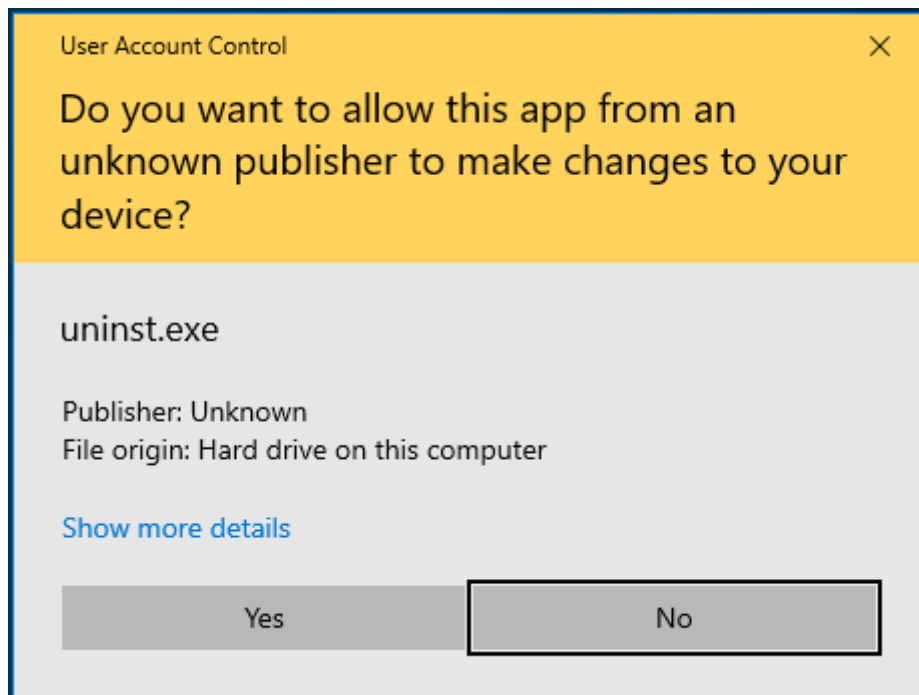
Unattended Uninstall

The uninstaller, which is an executable called `uninstall.exe` that remains in the Pandora FMS installation directory, also allows unattended uninstall, for this you have to run the uninstaller with the option `/S`.

For example, assuming that Pandora FMS is installed in the default path:

```
"%ProgramFiles%\pandora_agent\uninst.exe" /S
```





Using PandoraAgent.exe from the command line

If you run:

```
pandoraagent.exe --help
```

will display something similar to this:

```
C:\Users\Jimmy>"%ProgramFiles%\pandora_agent\pandoraagent.exe" --help
Pandora agent for Windows v7.0NG.761 Build 220427

Usage: C:\Program Files\pandora_agent\pandoraagent.exe [OPTION]

Available options are:
  --install:  Install the Pandora Agent service.
  --uninstall: Uninstall the Pandora Agent service.
  --test-ssh: Test the SSH Pandora Agent configuration.
  --test-ftp: Test the FTP Pandora Agent configuration.
  --process:  Run the Pandora Agent as a user process instead of a service.

C:\Users\Jimmy>
```

To install the service (if it is not installed), just run the following in the directory where the executable is (usually C:\Program Files or equivalent).

```
pandoraagent.exe --install
```

This will install the service on the machine, based on the path where the .exe is located.

To test if it connects via SSH with the Pandora FMS server:

```
C:\WINDOWS\system32>cd %PROGRAMFILES%

C:\Program Files>cd pandora_agent

C:\Program Files\pandora_agent>PandoraAgent.exe --test-ssh
Public key file C:\Program Files\pandora_agent\key\id_dsa.pub exists.
Private key file: C:\Program Files\pandora_agent\key\id_dsa exists.
Connecting with munchkin.pandorafms.com.
Authentication successful.
Host fingerprint:
Created a blank XML file in C:\Program Files\pandora_agent\temp\ssh.test
Remote copying C:\Program Files\pandora_agent\temp\ssh.test on server
munchkin.pandorafms.com at /var/spool/pandora/data_in/ssh.test
Successfully file copied to remote host
Successfully disconnected from remote host
The SSH test was successful!

C:\Program Files\pandora_agent>
```

If you want to uninstall it, it's the same process but with a different option:

```
pandoraagent.exe --uninstall
```

Pandora FMS Windows Agent as a process

It is possible, for debugging, testing, and other unusual circumstances, to run the agent in "Process" mode. This is done by running it from the command line:

```
pandoraagent.exe --process
```

There are some limitations in running in process mode, since Pandora FMS is designed to run as a service and under the SYSTEM user. If you run it with another user without privileges, there will be functionalities that do not work correctly.

Pandora FMS Agent Uninstall tar.gz

It must be taken into account that in order to uninstall the Software Agent you must have the corresponding installation package. It is recommended to use the same package used for the initial installation.

If you do not have the installer initially used, you must download the corresponding version from:

<https://pandorafms.com/en/downloads/>

Once the `.tar.gz` package is downloaded and on the target system, it must be unzipped.

Elevating privileges to `root` or using a user with the highest privileges.

```
sudo su
```

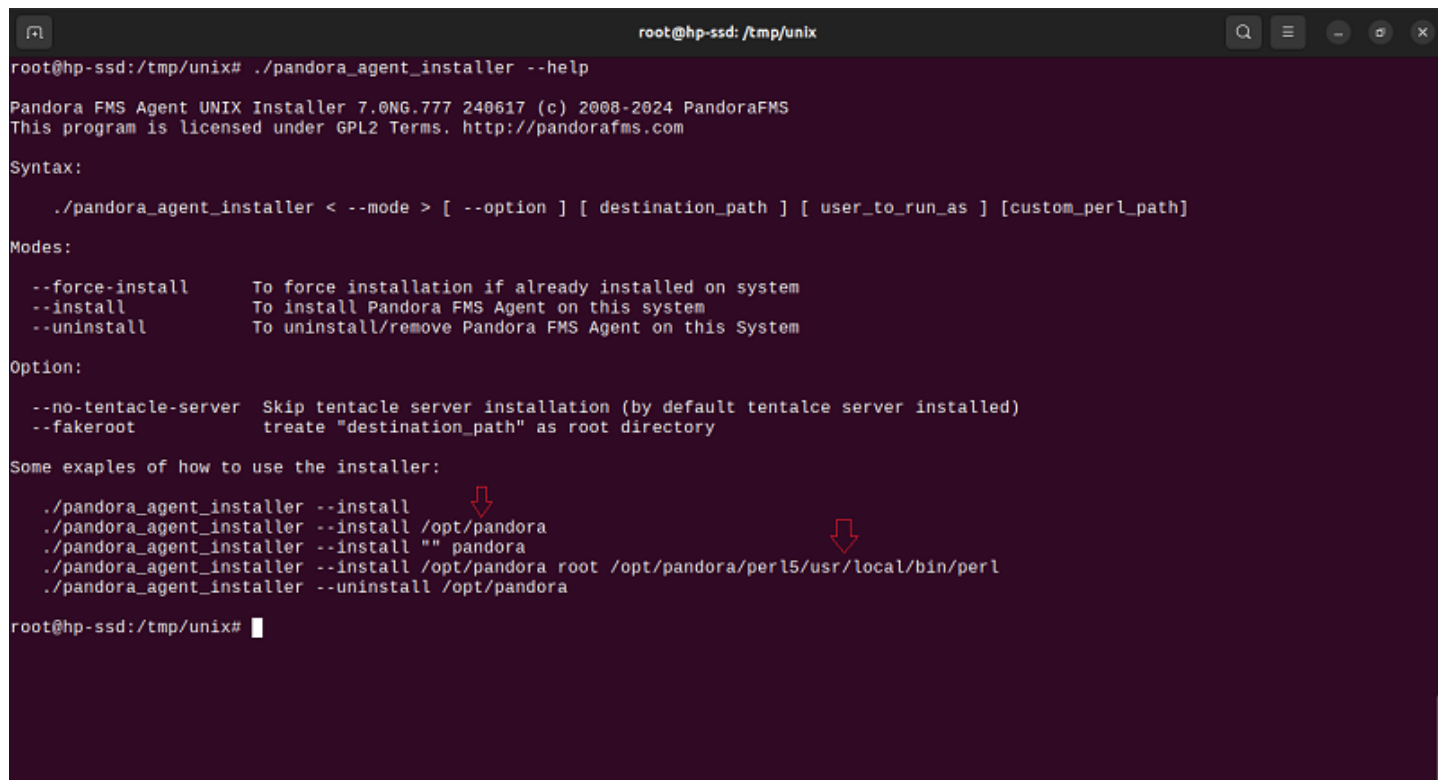
Unzipping the installer:

```
tar xvzf < pandora_agent_installer >.tar.gz
```

You must enter the unix directory that was generated after unzipping the installer:

```
cd unix
```

Once in this directory you will have access to the installer executable `pandora_agent_installer`, if you execute it with the `--help` parameter, the available options will be shown. Among them there is an example of how to uninstall the agent when a custom location was used.



```
root@hp-ssd: /tmp/unix
root@hp-ssd:/tmp/unix# ./pandora_agent_installer --help
Pandora FMS Agent UNIX Installer 7.0NG.777 240617 (c) 2008-2024 PandoraFMS
This program is licensed under GPL2 Terms. http://pandorafms.com

Syntax:
  ./pandora_agent_installer < --mode > [ --option ] [ destination_path ] [ user_to_run_as ] [custom_perl_path]

Modes:
  --force-install  To force installation if already installed on system
  --install        To install Pandora FMS Agent on this system
  --uninstall      To uninstall/remove Pandora FMS Agent on this System

Option:
  --no-tentacle-server  Skip tentacle server installation (by default tentacle server installed)
  --fakeroot            treat "destination_path" as root directory

Some exaples of how to use the installer:
  ./pandora_agent_installer --install
  ./pandora_agent_installer --install /opt/pandora
  ./pandora_agent_installer --install "" pandora
  ./pandora_agent_installer --install /opt/pandora root /opt/pandora/perl5/usr/local/bin/perl
  ./pandora_agent_installer --uninstall /opt/pandora

root@hp-ssd:/tmp/unix#
```

If the installation was performed in a custom location, the corresponding option must be used for uninstallation. For this case it will be assumed that you have a standard

installation in the default location.

Before starting the uninstallation process it is recommended to stop the Software Agent service:

```
systemctl stop pandora_agent_daemon
```

Subsequently, the uninstallation process can be started:

```
./pandora_agent_installer --uninstall
```

Once this process is finished, you must reload systemctl:

```
systemctl daemon-reload
```

Finally, the following directories must be deleted:

```
/etc/pandora  
/var/log/pandora  
/var/spool/mail/pandora  
/var/spool/pandora  
/usr/share/pandora_agent
```

This will complete the uninstall process of the PFMS Software Agent.

Pandora Agent Uninstallation FMS .RPM

The Pandora FMS Software Agent service should be stopped:

```
systemctl stop pandora_agent_daemon.service
```

To start the uninstallation process, run:

```
dnf remove pandorafms_agent_linux.noarch
```

If necessary, yum or rpm -e is used instead of dnf.

Once this process is finished, you must reload systemctl:

```
systemctl daemon-reload
```

Finally, delete the following directories:

```
/etc/pandora  
/var/log/pandora
```

```
/var/spool/mail/pandora  
/var/spool/pandora  
/usr/share/pandora_agent
```

This completes the uninstall process of the Software Agent.

[Back to Pandora FMS Documentation Index](#)