



Pandora FMS 7.0 Next Generation

Two busy years after Pandora FMS 6.0's launch, we are proud to present the latest version of our monitoring software: **Pandora FMS 7.0 Next Generation**. It comes stacked with new functions and debugs, destined to simplify your day-to-day monitoring tasks.

New interactive network maps

All previous types of maps have been consolidated, and their functions integrated into automatic network topology detection. It also allow users to link to L2 manuals.

The screenshot displays the Pandora FMS Enterprise web interface. On the left, a network topology map shows various nodes connected by lines, with IP addresses like 192.168.50.252 and 172.17.0.1. A sidebar on the left contains navigation icons. On the right, a modal window titled 'Edit node 192.168.50.1' is open, showing configuration details for a specific node.

Node Details

- Agent: 192.168.50.1
- Addresses: 192.168.90.254, 192.168.70.1, 192.168.80.1, 192.168.50.1
- OS type: Other
- Group: Applications

Interface Information (SNMP)

Name	Status	Graph	Ip	MAC
X0	Green	Checked	--	C0:EA:E4:6E:9B:20
X1	Green	Checked	--	C0:EA:E4:6E:9B:21
X2	Green	Checked	--	C0:EA:E4:6E:9B:22
X3	Green	Checked	--	C0:EA:E4:6E:9B:23
X4	Green	Checked	--	C0:EA:E4:6E:9B:24

Node Options

Shape: Circle

Relations

Node Source	Interface Source	Interface Target	Node Target	E.
192.168.50.1	X2_!OperStatus	Gi0/19_!OperStatus	192.168.50.252	✎ ✖
192.168.50.1	X3_!OperStatus	Gi0/1_!OperStatus	192.168.50.252	✎ ✖
192.168.50.1	X1_!OperStatus	Gi0/9_!OperStatus	192.168.50.252	✎ ✖

Dynamic monitoring: automatic threshold calculation

An intelligent and predictive system that allows different module thresholds to be automatically established, based on data collected during a specific timeframe.

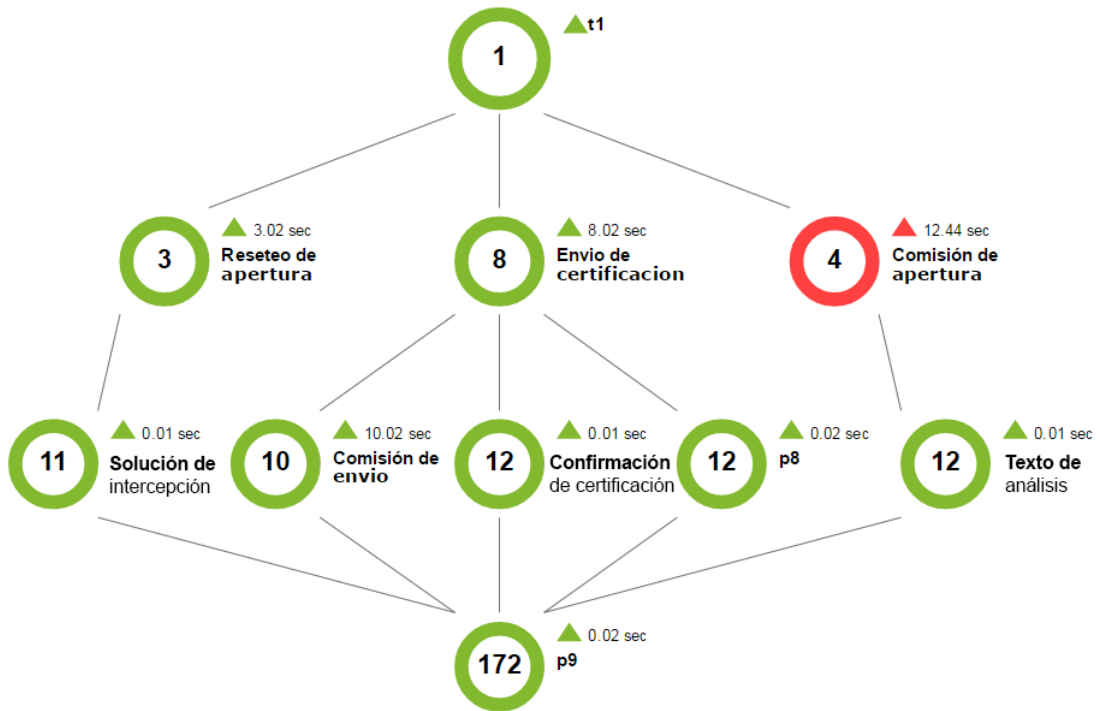
Update Manager Online on Metaconsole

If you're online it's now possible to update the Metaconsole without having to manually download packets.



Business transaction monitoring

Distributed business transaction monitoring provides oversight and feedback on each phase of any level of business transaction (online sales, security certification systems).



Rolling Release

From the current release (Pandora FMS NG: Next Generation) onward, patches and improvements will be applied incrementally, directly from the console, without the need for migrations or updates.

Console now includes event history

Being able to store events on the database means long-term events-reporting.

Rename agents and matching names

Agents are free to be relabelled, and will subsequently count as aliases. This allows host names to be duplicated on a single installation..

New global service map view

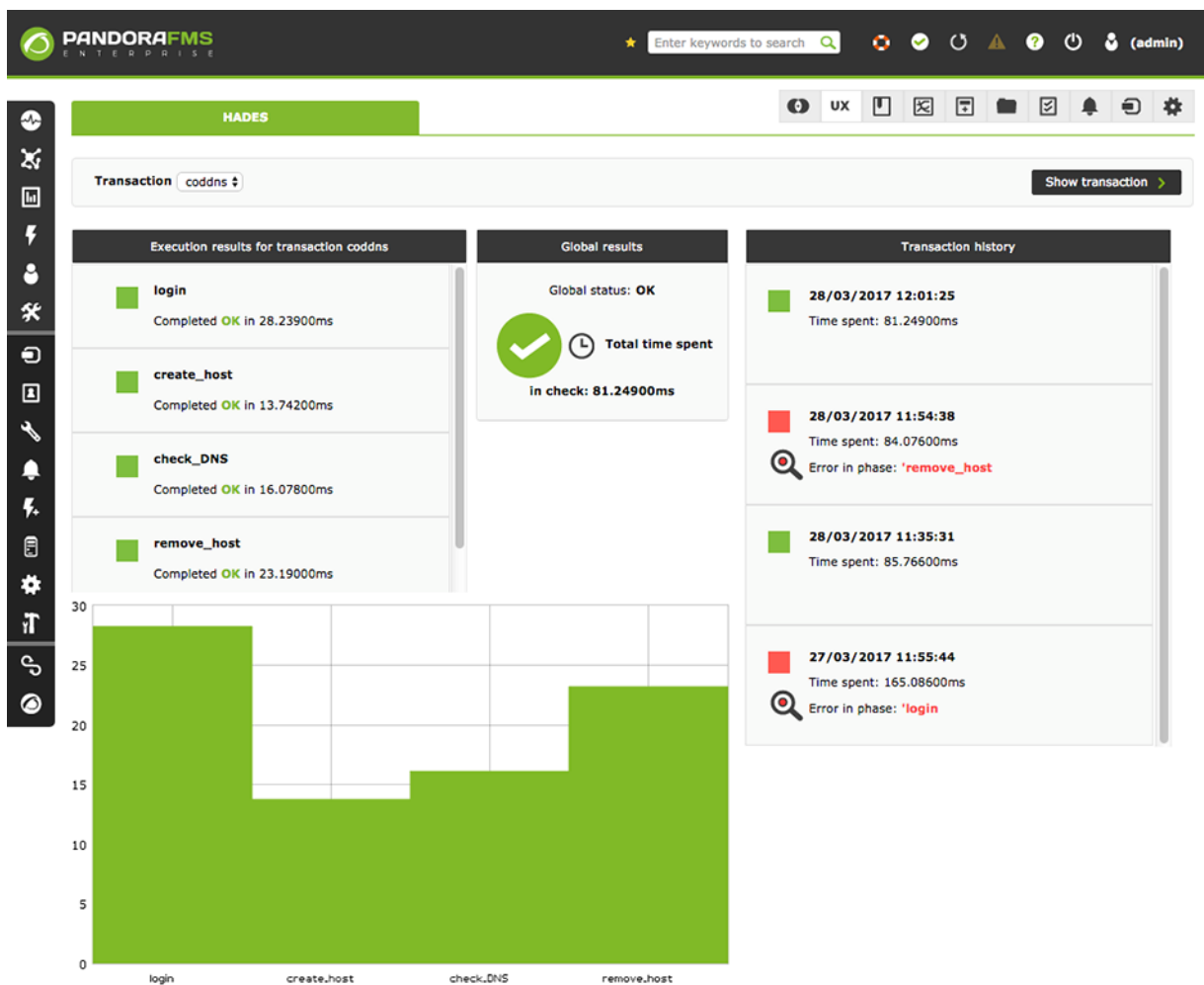
A new global vision lets you see all current services and their status at a glance.

Service	Status	Service	Status	Service	Status
AD	Critical	Checkups Remotos	Normal	Cluster	Normal
Company Mail	Warning	Customer 1	Warning	Cluster_CAS	Normal
Customer 2 MySQL	Warning	Customer 1 MySQL	Warning	CLUSTER_HUB	Warning
Firewall	Critical	Customer 2 satellite	Warning	Customer 1 Satellite	Critical
Mapa de Servicios	Warning	Customer global services	Warning	Customer 2	Critical
SLA web checks -> artica.es	Warning	DNS_Mail	Critical	drbd (P)	Warning
SLA web checks -> wku	Warning	Mail1_cas1	Warning	Mail1_HUB1	Warning
Switch_mail	Warning	Mail1_cas2	Warning	Mail1_HUB2	Warning
		SLA web checks -> integra	Warning	SLA web checks -> pandorafms.blog	Warning
		SLA web checks -> pandorafms.com	Warning		



UX Monitoring

UX monitoring for complete transactions, start to finish, including flash, java and complex actions. Test heavyweight desktop applications remotely, through various transaction phases, checking each is successfully completed, and timings related to each phase.



Satellite server upgrades

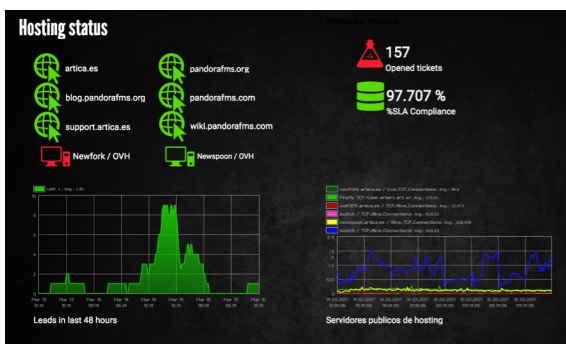
- The satellite server allows block SSH checks, reutilizing a single remote connection to carry out different checks against remote machines.
- Includes disabled networks for Satellite checks, for faster and more efficient scanning.

- L2+L3 network recognition, adopting the ReconServer model.
- Credentials safe storage allows passwords (wmi, SSH) to be securely saved, via encryption, and reemployed on different devices, with no need to define them for each host.



Visual console upgrades

We've worked on improving current functions, fine-tuning here and there, and improving the look of the final product. New icons, true type fonts and a considerable overhaul of the editor in terms of usability.



Dashboard upgrades

New Dashboard widgets: histogram module, agent/module status matrix with improved filters, module data (icon, value), SLA percentages with histogram and data charts. You can also share your dashboard with another user who doesn't have access to the console (public link).

New: Pandora FMS Sync-Server

Extend your monitoring to isolated and/or restricted networks. Communication is initiated by the Pandora FMS server, instead of from the remote network to the server.

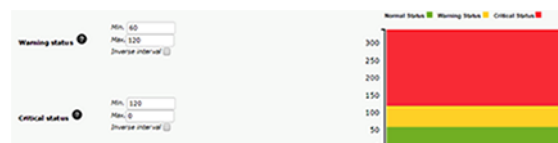
Mobile version for Metaconsole

New improved version for a better user experience.



Visual help to select thresholds

Dynamic graphs displaying approximate representations of established module thresholds, helping the user to more correctly establish the thresholds required..



New ISO installation based on CentOS7

The OS used on the official ISO is now updated, from CentOS 6 to CentOS 7, as well as containing the latest version of Pandora FMS.



MAJOR AND MINOR UPGRADES

- Agent IP searches now also allow for secondary IPs
- Improved SLA algorithm
- New report types: weekly and monthly SLA.
- Real time report execution has been limited. If a report is too dense a warning will show with an option to send the report by email..
- Now possible to change dashboard groups.
- Custom reports can now be even more fine-tuned
- Upgrades on mobile console.
- Added: a list of any agents in collections.
- Programmed tasks improvements. New task added to 'Create reports from template and send by email'.
- Fixed: a problem with agent installer permissions on tar.gz. packets.
- Warning added to explain that perl-Sys-Syslog dependencies are necessary.
- Updated: pandora_agent.conf for FreeBSD.
- Fixed: errors in exporting event reports to PDF and CSV.
- Public Dashboards link.
- Improvements in Active Directory integration and authentication.
- Fixed: problems when importing policies that included plugin server modules.
- Added: customizable percentiles on graphs.
- It's now possible to order an IPAM list according to IP, network, interval or latest update.
- There's a new programmed tasks extension on the Metaconsole.
- Fixed: a problem with the zoom on the service maps.

DO YOU WANT TO DOWNLOAD PANDORA FMS 7.0 NEXT GENERATION?

Click on the link below, and in the download area of the Pandora FMS website select 7.0 package.

<https://pandorafms.org/en/downloads/> 