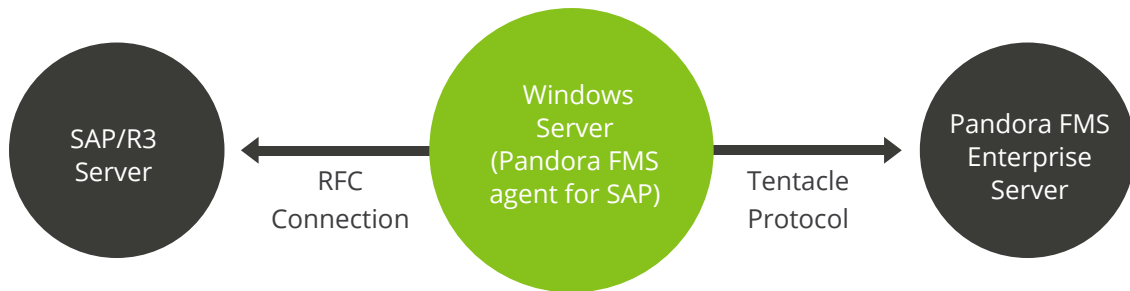


Pandora FMS Plugin Server for SAP

Pandora FMS has a specific solution preconfigured to monitor all of the SAP environments (R/3, CRM, SRM, BI, XI/PI, WAS Netweaver, etc.). It also has a default set of monitors that will save us the time to do a daily checklist of the system, and will allow to send alerts reporting of each of the events.



Advantages of Pandora FMS for SAP

The main advantage of the Pandora FMS plugin for SAP is the automatism in sending emails, reports, etc to report at any time to the functional teams or end users of the status of the system, in order to determine what correction actions to take.

There's no need to install anything on the SAP server (no transports, no add-ons), just create an user in our SAP system. All the development is implemented in the plugin itself, whose logic has been developed by our team of BASIS and XI/PI with 10 years of experience.

SAP® Certified
Powered by SAP NetWeaver®

SAP Monitoring points

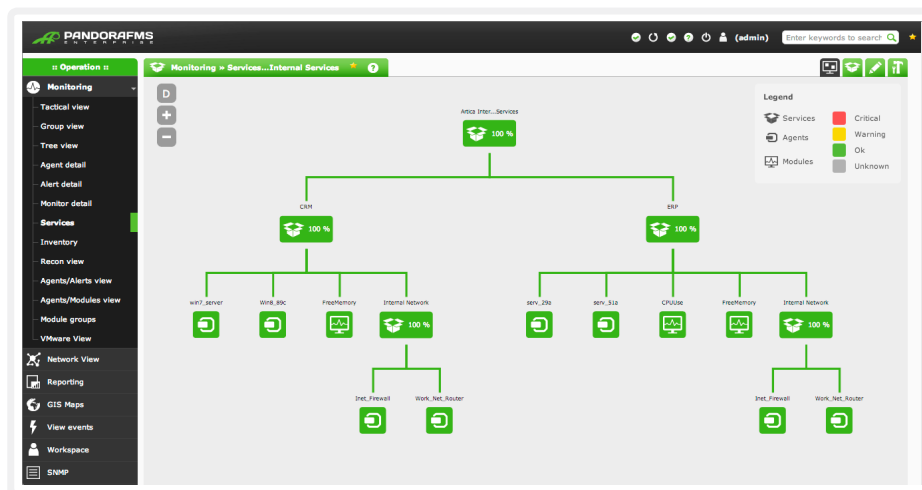
- Average response time.
- System up.
- Workprocess control (SM50).
- DIA, DGB, UPD, UP2, SPO, ENQ Workprocess wrong.
- Workprocess stopped or without active reset.
- Locking tickets in the system. (SM12).
- Number of wrong batchinputs in the system since yesterday (SM35).
- Canceled jobs management in the system (SM37).
- Control of dumps produced in the system (ST22).
- Control of idocs in the system (WE05).
- Control of the tablespaces size above 95% (DB02).
- Tablespaces size % (DB02).
- Users logged at the system (AL08).
- Control in qRFC queues.
- Control of transactional RFC (SM58).

Other control and security checks

- Control of users with SAP_ALL profile, sending an email if a user is assigned this critical approval profile.
- Opening control firing a mail client if a user opens the principal.
- Control of the number of users who have never login to the system and have the initial password. (saving SAP licenses).

360° Monitoring/ Full stack

Thank to the combination of Pandora FMS and SAP, we could monitor, with the same tool, systems and databases from all environments and technologies related to SAP environments.



Pandora FMS as a compliment to SAP Solution Manager

Adding Pandora FMS for SAP capacities to the Solution Manager allows to have a daily monitoring of dozens of checkpoints, which setup time takes just one day. The need of patching and requiring experts in this concrete monitoring area of the Solution Manager is no longer needed.

Further information at:



Ártica Soluciones Tecnológicas
GranVía 62, St
28013, Madrid
(+34) 91 559 72 22
info@artica.es
www.pandorafms.com