

PANDORAFMS

W E L C O M E T O M O N I T O R I N G H E A V E N

NEW THINGS ABOUT PANDORA FMS 5.0



Pandora FMS 5.0 has just arrived with many new features and improvements to meet all your needs. Below, you have a little taste of what you can enjoy with Pandora FMS 5.0. [Request a trial version and evaluate Pandora FMS Enterprise for 30 days.](#)

1. INTERFACE ENHANCEMENTS

With a visual completely renovated appearance and a powerful graphics engine based on interactive Flot (HTML5), the new interface enhancements allow you to zoom in and zoom out and get interactive views without using Flash.



3. IMPROVED MONITORING CORE

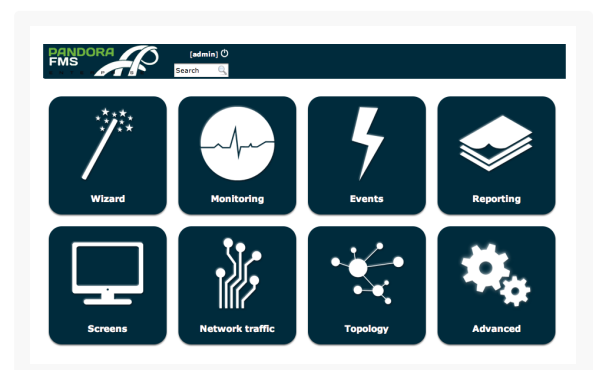
The monitoring core now includes new features to monitor your systems in a much more powerful and detailed way. Furthermore, Pandora FMS servers can support more charge.

2. REPORTING ENHANCEMENTS

With the new report templates, it takes just two clicks to create a standard report with combined graphs and covers. The new charts show data lacks of time. The SLA reports have been improved to exclude planned downtime.

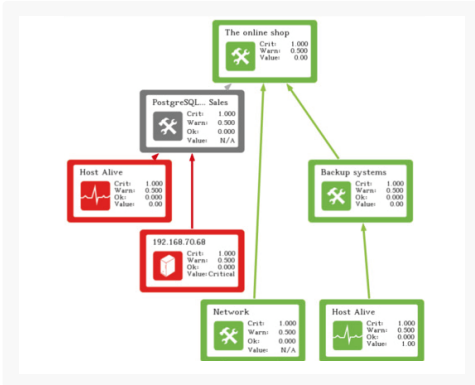
4. METACONSOLE

The Metaconsole is a new self-service console designed to facilitate the monitoring configuration to our new users. Through the Wizard on predesigned components, users can manage their own monitoring. This data operating and displaying system is completely new and allows you to access several Pandora FMS servers simultaneously.



5. SERVICES TREE

The Business Plan Monitoring (BPM) has a visual system to built services trees where you can draw the hierarchy and content of the services and their dependencies.

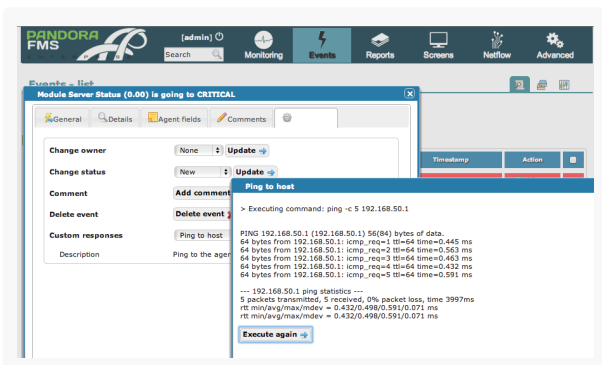


7. NEW MOBILE CONSOLE

With these native applications for iPhone and Android, you can operate from your mobile phone easily.

9. IMPROVED EVENT MANAGEMENT

With the new Pandora FMS event management console, you can see all the information of your organization in a single view. Besides, you can export events to other systems or use Pandora as a tool to centralize events, including correlation.

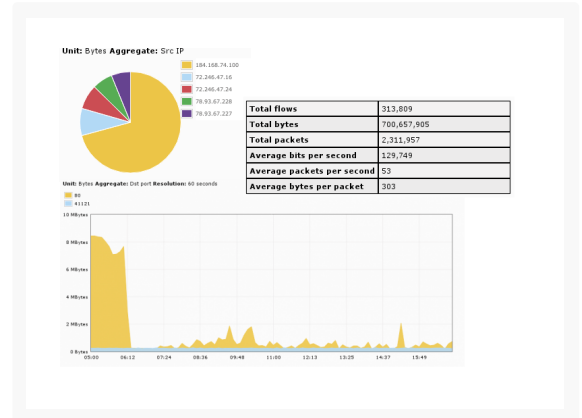


6. NETFLOW

This technology is used to analyze in real-time large networks traffic.

It helps you find problems, misuses and create capacity plans by using data from the backbone routers.

With Pandora FMS, you can make real-time queries and see reports by IP, protocol, traffic, etc.



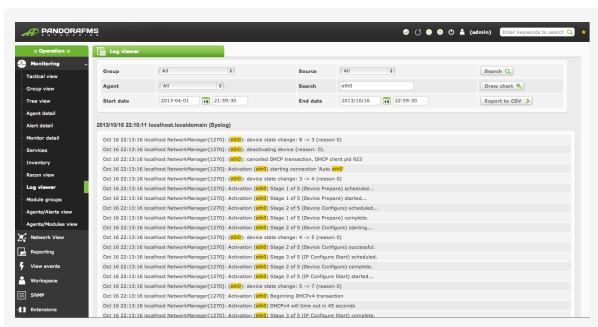
8. NEW VMWARE PLUGIN

This new plugin has important performance enhancements. Now, you can parallelize and distribute the load to monitor environments with hundreds of virtual machines easily. New screens and dashboards complete this new version that will allow you to make the most out of your platform.



10. COLLECTING LOGS

Pandora FMS Enterprise provides a solution to manage hundreds of megabytes of data per day. This solution allows you to reuse the same monitoring agents to collect log data by using a similar syntax to the current monitoring logs. The logs collected from agents (eventlog or text files) are literally stored (RAW) in the disk of the Pandora FMS server. With these data, you can perform researches on thousands of lines of logs of our systems.



Technical details

SERVERS

- The database maintenance has been improved.
- Performance improvements for both, local and remote checks, allowing modules to increase the number of single-server monitored by Pandora FMS. Custom fields can be sent from the XML.
- Improved treatment of unknown status for graphics, SLA and Events.
- The data server sizing system has been modified.
- The self-monitoring server has been improved.

- The calculation of the agents' status from the server has been improved.
- The module and agent status calculation has been optimized to ease the console operation.
- The performance of the SNMP Enterprise server has been improved.

METACONSOLE

- API's and screens specially designed for SAAS model operations.
- Specific reports for the Metaconsole.
- Report Templates.
- Metaconsole Event Viewer (Unification of events in the metaconsole).
- Module types (Open: Basic monitoring, Advanced monitoring), so that it could be parameterized (or not) in the monitoring Wizard.
- Categories of modules to bill separately (according to the SaaS model).

INTERFACE

- Improvements in the graphics engine, with HTML5 graphics, zooms, fully context-sensitive information and a spectacular look & feel.
- Full redesign of the mobile console.
- New support options in-app have been improved and added.
- New interface redesign (visual style and layout).
- Password policy implementation.
- New flag to NOT logged users (users who do not enter the console).
- ACL based on tags.
- The page autorefresh option by default has been removed.

- Network map improvements (open).
- Interface for the modules, alerts and plugins definition through macros has been improved.
- Web console and native android app for displaying and operating.
- Interactive SNMP Explorer based on HTML5/Ajax.
- New custom navigation bar with quick links and tactical information that can be seen at a glance.

ALERTS

- Improvements in Planned Downtime Alert and Recover.
- Macros warning to include tags.
- New macros email.
- Email associated to tags.
- Multiple alert emails.

REPORTS

- Templates for combined reports and graphs that facilitate the creation of standard reports from templates.
- Searches in the report output.
- Bit of no change to report.
- Mass erasing of report elements.
- XML reports extending.
- Date Selection / Time report Control.
- Planned SLA stop exclusion.
- The dashboards can be shared. Since the owner model changed, it is based on the group instead of being based on a user.
- Visual console element link disabled.

MODULES

- Cron modules on the remote server (remote modules that run on certain occasions regularly, Cron type).
- New fields for modules.
- Denial of warning / critical conditions.
- Button to create library modules from an existing module.
- Automatic recovery of asynchronous modules (the asynchronous modules go back to the normal status if xxx time passes by without receiving data).
- Intensive network check: Fail-fast Retry (eg ping interval / 5 seconds for a couple of tries).

MOBILE APP

- New update for Event Viewer with more features.
- Improvements in the Pandora FMS agent for Android.
- New APP (Console Mobile) for Android and iPhone.

AGENTS

- Agent intensive checking: modules can be executed every 5 seconds, sending data just in case of failure and refreshing information every 5 minutes.
- QUIET Mode for agents.
- Several new fields in the XML agent.
- Custom fields en XMLs.
- Improved compatibility with Solaris and HP-UX.
- New script to generate events remotely.

- Improved compatibility with Windows log event.
- New installer for Windows.
- Compatibility with Windows 7, Windows 8 and Windows 2012.

SERVICES

- SLA and alert Support.
- New representation and navigation in tree view.

GENERAL

- The Netflow Support is integrated in the monitoring.
- The traps performance has been improved with new capture system variables and standard event recognition.
- Copy of modules between policies.
- The change detection in inventory modules has been improved.
- Improvements in API and CLI management policies, modules, users validating events and alerts and many other enhancements that will allow you to operate at 100% from the command line interface or via WEB API.
- Public URL access through reverse proxy.

PLUGIN AND RECON


- New parameters for retry and timeout remote plugin.
- Improvements in recon for multiple networks.

EVENTS

- Improvements in the event management system: new fields, views, queries and reports and an automatic validation system much more powerful.
- New fields for events: instructions for operation with critical events, critical source event and validation flow / more complete closure.
- Answer Tools to events (execute manually a command from the console to a given event), eg: Telnet connection, make a Ping or traceroute.
- Improved event correlation system.
- Historic event System.
- Event Optimization.
- Remote Event Generation via API / CLI.
- Scaling and event consolidation for multisite deployments.

Contact

 c/ Alberto Aguilera 7, 3ºD Madrid

 (+34) 91 579 72 22

 info@artica.es

 www.pandorafms.com